



MOUNTAIN RESEARCH INITIATIVE

MAKING CONNECTIONS FOR OUR CHANGING MOUNTAINS

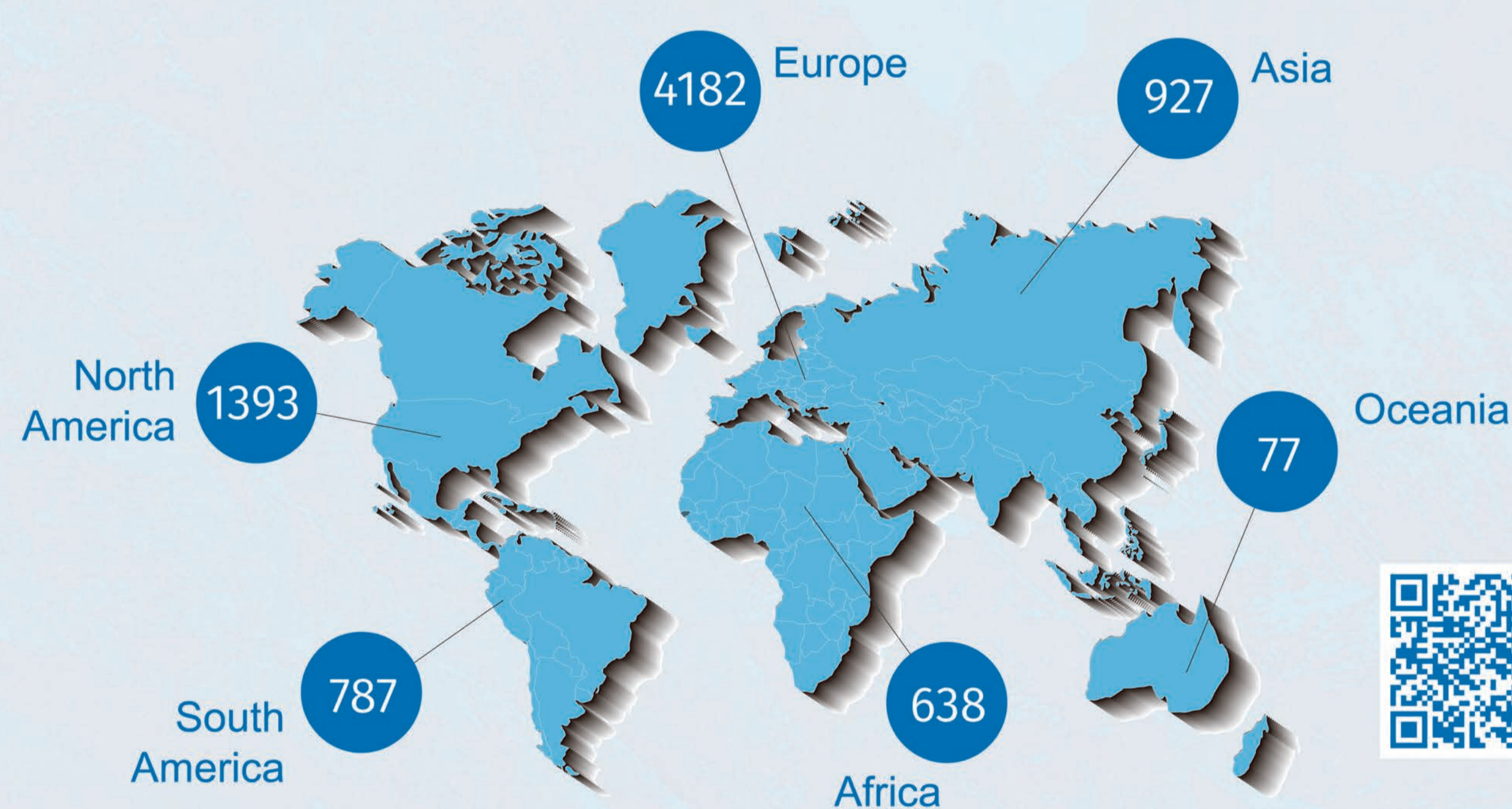
The Mountain Research Initiative (MRI) envisions a world in which research to identify and understand drivers and processes of global change in mountains is promoted and linked across disciplines and mountain regions worldwide.

OUR HISTORY

Since its origins in the 1990s, and with the founding of the MRI Coordination Office in 2001, the MRI has striven to promote basic and applied research to understand how drivers and processes of global change present challenges and opportunities in mountain social-ecological systems.



OUR NETWORK

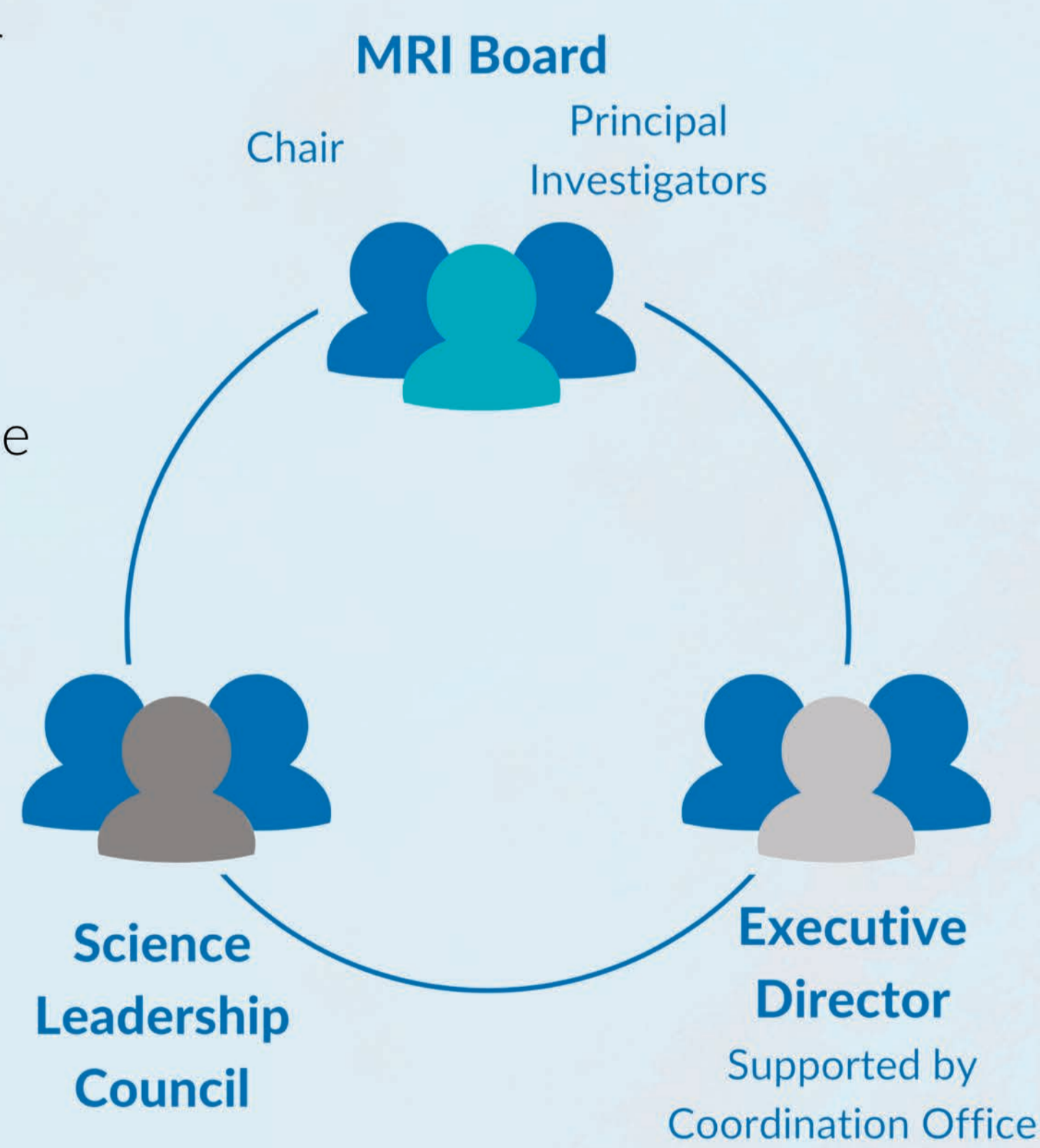


Distribution of entries in the MRI Expert Database, June 2022



MRI GOVERNANCE

The MRI Board, together with the MRI Science Leadership Council and the MRI Executive Director, constitute the MRI Governing Body. The MRI Governing Body oversees and provides strategic direction and advice to support the implementation and development of both flagship and community-led activities, with the support of the Coordination Office staff.



WHAT WE DO

Our activities connect researchers in mountain-related fields in natural and social sciences and humanities, as well as practitioners and broader society, helping to address shared research goals and knowledge needs. Enabling coproduction of knowledge, empowering the next generation of researchers, and facilitating diverse participation are key considerations for all our activities.

Flagship Activities



Community-led Activities

- Synthesis Workshops
- Working Groups



CONNECT WITH US

MRI Experts Database

Connect with over 8000 colleagues by searching the MRI expert database - and sign up so they can find you, too!

MRI Global Newsletter

Subscribe to our monthly newsletter for the latest updates from the MRI network.



@MtnResearchMRI



@mountainresearchinitiative

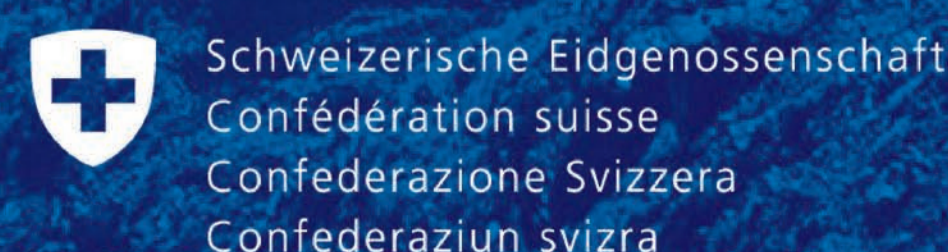


@MountainResearchInitiative



www.mountainresearchinitiative.org

The MRI is supported by:



Swiss Agency for Development and Cooperation SDC

